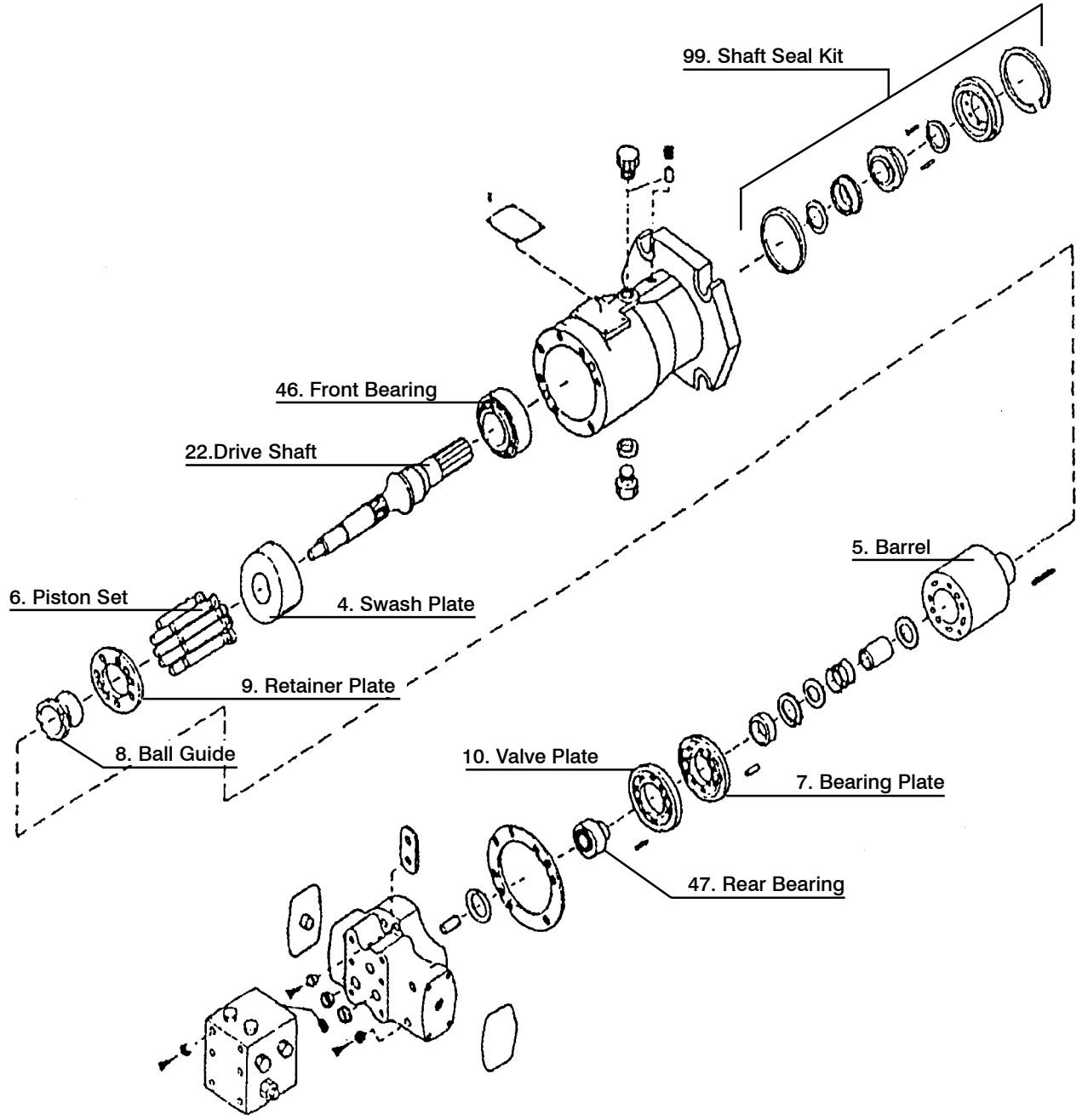


# TIDAL FLUID POWER AXIAL PISTON MOTOR SPARE PARTS



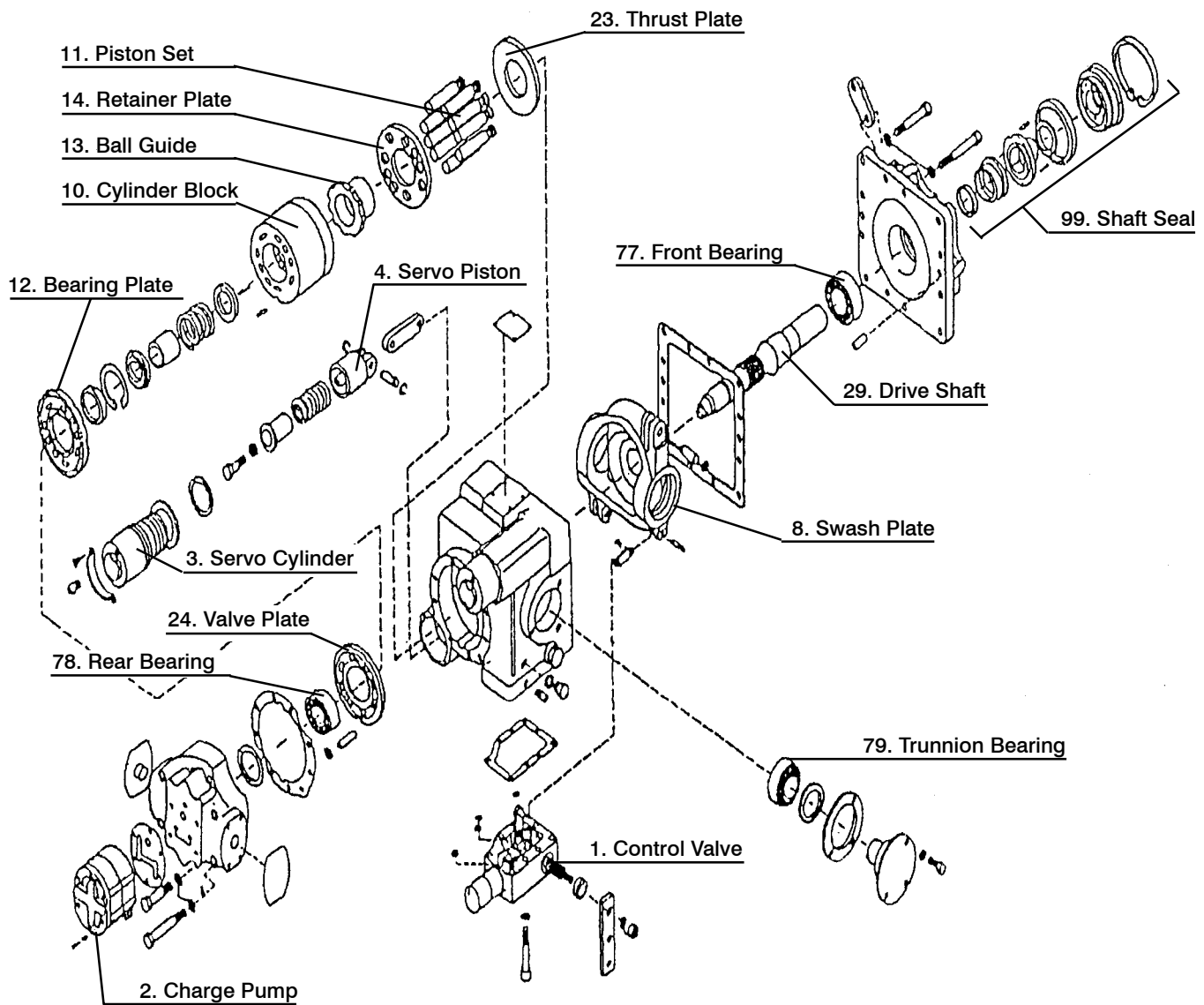
NOTE\*  
98. Body Seal Kit, contains all O'Rings and gaskets.



# TIDAL FLUID POWER AXIAL PISTON PUMP SPARE PARTS



NOTE\* 98. Body seal kit, contains all O'Rings and gaskets.



# TIDAL FLUID POWER

## AXIAL PISTON PUMP/MOTOR SPARE PARTS NUMBERS



### AXIAL PISTON PUMP PART NUMBERS

ITEM	DESCRIPTION	PART NUMBER 20	PART NUMBER 22	PART NUMBER 23
1	CONTROL VALVE	10001	10001	10001
2	CHARGE PUMP	10005	10007	10007
3	SERVO CYLINDER	20001	10008	10008
4	SERVO PISTON	20002	20003	20003
8	SWASH PLATE	20004	10013	10014
10	CYLINDER BARREL	10015	10017	10018
11	PISTON SET ( 3 )	30003	30005	30006
12	BEARING PLATE	20005	20007	20008
13	BALL GUIDE	20009	20011	20012
14	SLIPPER RETAINER	30007	30009	30010
23	THRUST PLATE	30012	30014	30015
24	VALVE PLATE CW	20015	20017	20018
24	VALVE PLATE CCW	20020	20022	20023
29	DRIVE SHAFT 14T	10025	10027	10028
29	DRIVE SHAFT 21T	20025	20027	20028
29	DRIVE SHAFT 23T	30025	30027	30028
77	FRONT BEARING	40126	40127	40128
78	REAR BEARING	40130	40132	40133
79	TRUNNION BEARING	40135	40137	40138
98	BODY SEAL KIT	00101	00103	00104
99	SHAFT SEAL KIT	00113	00113	00114

### AXIAL PISTON MOTOR PART NUMBERS

ITEM	DESCRIPTION	PART NUMBER 20	PART NUMBER 22	PART NUMBER 23
4	SWASH PLATE	20041	10024	10025
5	CYLINDER BARREL	10015	10017	10018
6	PISTON SET ( 3 )	30003	30005	30006
7	BEARING PLATE	20005	20007	20008
8	BALL GUIDE	20009	20011	20012
9	SLIPPER RETAINER	30007	30009	30010
10	VALVE PLATE	40001	40003	40004
22	DRIVE SHAFT 14T	10047	10049	10050
22	DRIVE SHAFT 21T	20047	20049	20050
22	DRIVE SHAFT 23T	30047	30049	30050
46	FRONT BEARING	40169	40171	40172
47	REAR BEARING	40174	40176	40177
98	BODY SEAL KIT	00109	00111	00112
99	SHAFT SEAL KIT	00113	00113	00114