

**TRM SERIES  
RADIAL PISTON MOTORS**



**TRM SERIES MOTOR**

The TRM series is a crankshaft designed radial piston hydraulic motor, this design allows for low friction loss and high mechanical and volumetric efficiency especially at start up and low speeds.

The 5 cylinders are supported in the motor casing by two trunnions each which allow the cylinders to swivel so the piston and cylinder remain aligned with the eccentric axis of the crank shaft as the shaft rotates.

The cylinders are made of high strength steel and are not part of the motor casing.

The piston is a single component which can be fully balanced and whose diameter is not restricted by other design parameters. This means that a large number of cylinder bore can be possible in any one motor series. **ORDERING CODE**



	<b>TRM</b>	<b>1</b>	<b>100</b>	<b>H</b>	<b>P1</b>
<b>TIDAL RADIAL MOTOR</b>					
<b>MOTOR SERIES</b>					
<b>DISPLACEMENT</b>	<b>CC/REV</b>				
<b>OUTPUT SHAFT</b>	<b>H : SPLINE</b>	<b>P : PARALLEL</b>			
<b>DISTRIBUTOR</b>	<b>P1,P2 P3,P4.</b>	P1 STANDARD DISTRIBUTOR SHOWN OTHER CONFIG BY REQUEST			

**PERFORMANCE SPECIFICATION**

**1 NEWTON METER = 0.7376 FOOT POUNDS**

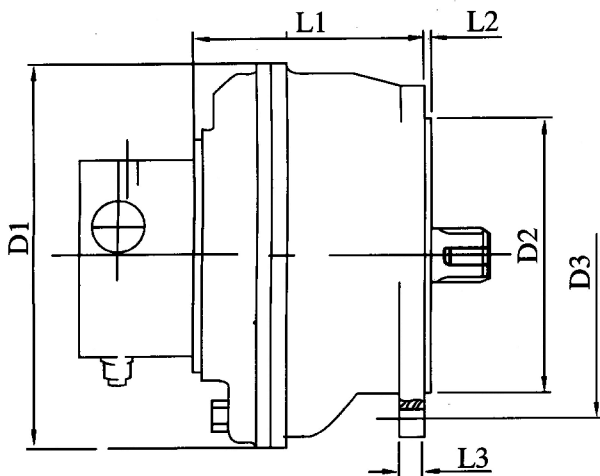
SERIES	TRM MOTORS	250 BAR CONTINUOUS						350 BAR MAX INTERMITTENT		Kw	Kg
1	Nom Displacement	100	150	175	200	250	300	350	45	28	
	Cont/Max Speed	650/1000	650/1000	650/1000	650/1000	500/700	450/700	450/600			
	Torque Nm/bar	1.54	2.4	2.68	3.14	3.8	4.9	5.42			
2	Nom Displacement	300	350	400	450	500	550	600	55	48	
	Cont/Max Speed	450/600	450/600	450/600	400/600	400/600	400/600	400/600			
	Torque Nm/bar	4.97	5.8	6.63	7.45	7.96	8.46	9.73			
3	Nom Displacement	500	600	700	800	900	1000	1100	80	68	
	Cont/Max Speed	400/600	400/600	400/600	400/600	400/600	400/600	350/500			
	Torque Nm/bar	7.71	9.3	10.8	12.4	13.6	15.4	16.7			
4	Nom Displacement	900	1000	1100	1200	1300	1500		100	108	
	Cont/Max Speed	350/500	350/500	350/500	350/500	350/500	350/500				
	Torque Nm/bar	14.33	15.91	17.5	19.1	20.5	23.8				
5	Nom Displacement	1500	1600	1800	2000	2200	2500		130	135	
	Cont/Max Speed	350/500	300/400	300/400	250/350	250/350	250/350				
	Torque Nm/bar	22.8	25.4	28.3	31.3	34.4	39.1				
6	Nom Displacement	2100	2500	3000	3200	3500			180	250	
	Cont/Max Speed	250/350	250/350	250/350	250/350	250/350					
	Torque Nm/bar	32.7	39.0	47.5	50.6	55.4					

**TRM SERIES  
RADIAL PISTON MOTORS**

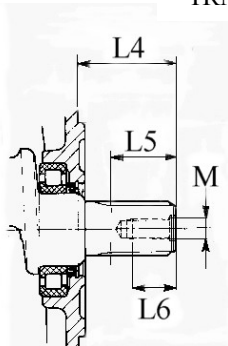
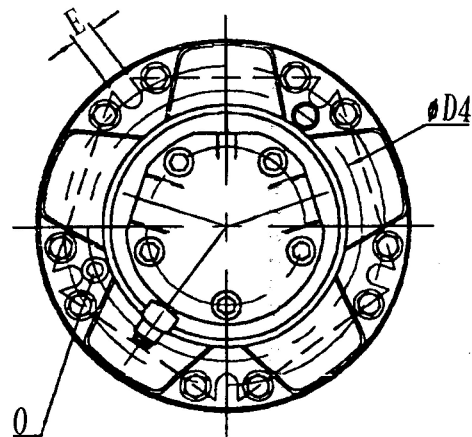


*DIMENSIONAL DATA*

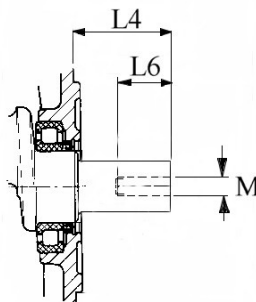
series	D1	D2	D3	D4	L1	L2	L3	L4	L5	L6	shaft details	O	M	E
TRM1-H	242	175	210	200	144	5	15	42	22	26	8-34d 11 x 38g6 x 7f7	1/4"	M12	14
TRM1-P	242	175	210	200	144	5	15	58		32	40 dia x 12 x 50 key		M12	14
TRM2-H	300	150	250	208	170	5	20	72	48	32	8-40d 11 x 36g6 x 7f7		M16	14
TRM2-P	300	150	250	208	170	5	20	72		40	50 dia x 16 x 55 key		M16	14
TRM3-H	380	265	310	270	192	10	20	72	48	32	8-54d 11 x 46g6 x 9f7	1/2"	M16	20
TRM3-P	380	265	310	270	192	10	20	86		40	50 dia x 16 x 55 key		M20	20
TRM4-H	410	265	310	285	211	13	20	90	61	38	8-65d 11 x 56g6 x 10f7		M20	20
TRM4-P	410	265	310	285	211	13	20	90		55	73 dia x 20 x 70 key		M30	20
TRM5-H	475	265	310	350	244	10	20	90	61	35	8-65d 11 x 56g6 x 10f7		M20	20
TRM5-P	475	265	310	350	244	10	20	132		55	73 dia x 20 x 110 key		M30	20
TRM6-H	510	381	419	387	298	18	30	130	77	44	10-95d11 x 82g6 x 12f7	M20	22	
TRM6-P	510	381	419	387	298	18	30	166		55	85 dia x 24 x 130 key	M20	22	



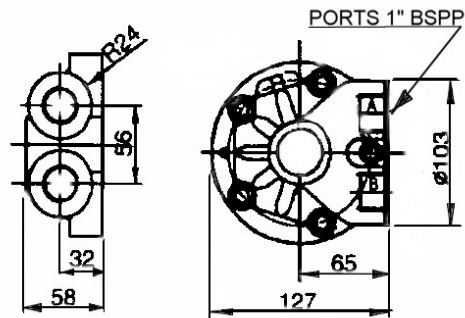
TRM MOTOR GENERAL DIMENSIONS



(H) SPLINE SHAFT



(P) PARALELL KEYED SHAFT



STANDARD FLUIDPORT