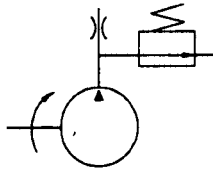


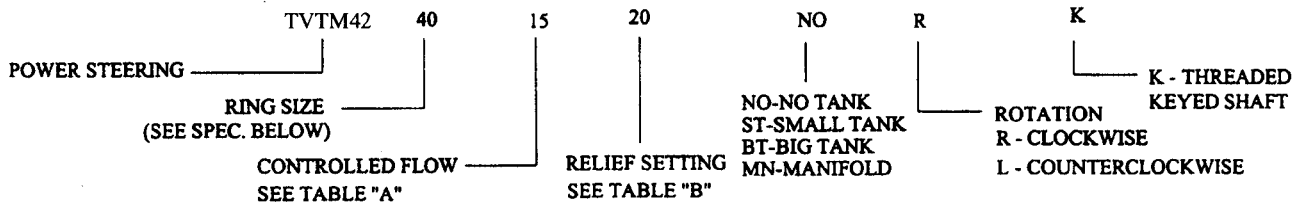
TFP TVTM42 POWER STEERING PUMPS



- * Compact Power Source for Steering Assemblies
- * Integral Relief and Flow Control
- * High Efficiency
- * Balanced Cartridge Design
- * Quiet Operation



◆ Power Steering Pump Ordering Specifications



Values based on using anti-wear type petroleum oil 150 SUS at 100°F and 0 PSI inlet pressure.

TFP MODEL SERIES	RING SIZE (DELIVERY USgpm @ 1200 R/MIN & 100 PSI)	DISPL. in ³ / r (cm ³ / r)	MAXIMUM SPEED - RPM			MAXIMUM PRESSURE PSI (BAR)	APPROX. WEIGHT lbs. (kg.)
			@100 PSI 7 BAR	@1500 PSI (100 BAR)	@2000 PSI (140 BAR)		
TVTM42	1	0.21 (3.4)	7000	5000	4250	2000 (140)	14 (6.4)
	1.5	0.31 (5.1)	7000	4500	4000		
	2	0.38 (6.2)	7000	4200	3800		
	4	0.79 (12.9)	7000	2800	2800		
	5	0.96 (15.7)	6000	2600	2300		
	6	1.18 (19.3)	5000	2500	2000		

TABLE A Controlled Flow (at 1600 RPM & 100 PSI)

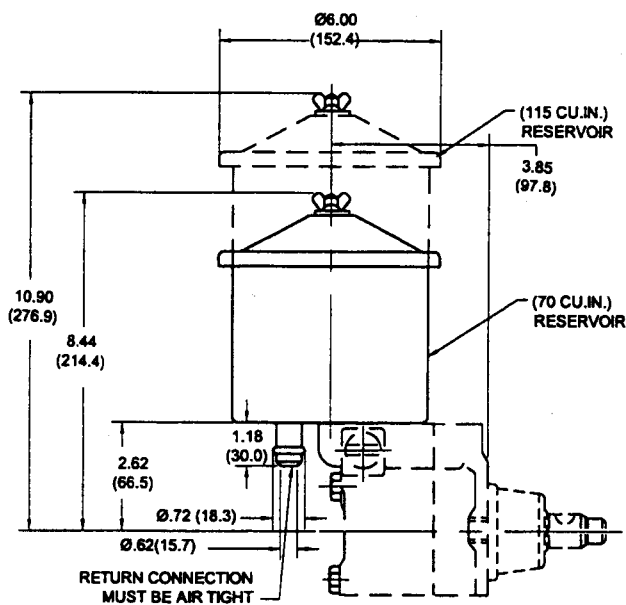
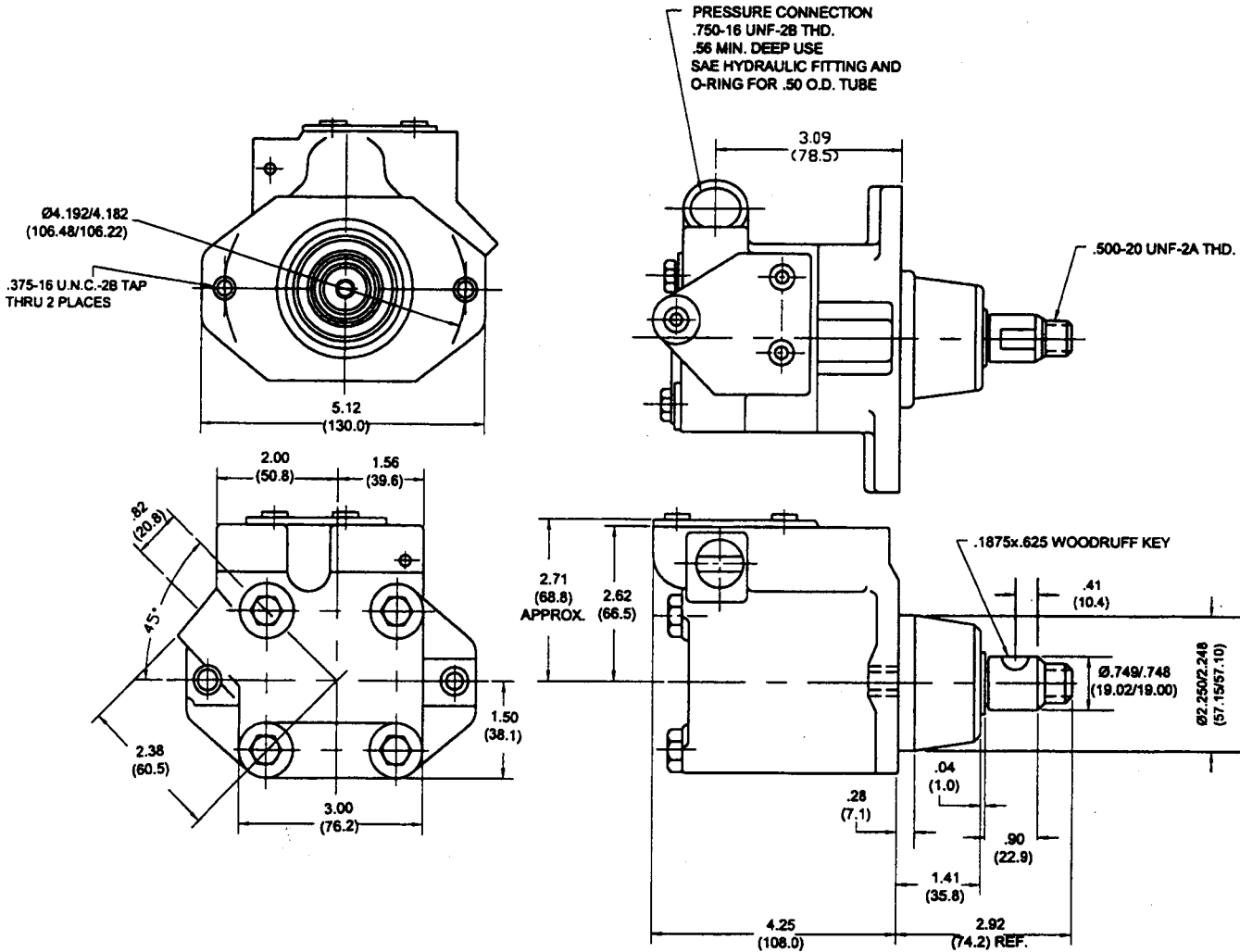
15	-1.5 USgpm (6 L/min)
20	-2.0 USgpm (8 L/min)
25	-2.5 USgpm (9.5 L/min)
30	-3.0 USgpm (11 L/min)
35	-3.5 USgpm (13 L/min)
40	-4.0 USgpm (15 L/min)
45	-4.5 USgpm (17 L/min)
50	-5.0 USgpm (19 L/min)
55	-5.5 USgpm (21 L/min)
60	-6.0 USgpm (23 L/min)
65	-6.5 USgpm (25 L/min)
70	-7.0 USgpm (26.5 L/min)
75	-7.5 USgpm (28 L/min)

TABLE B Relief Setting

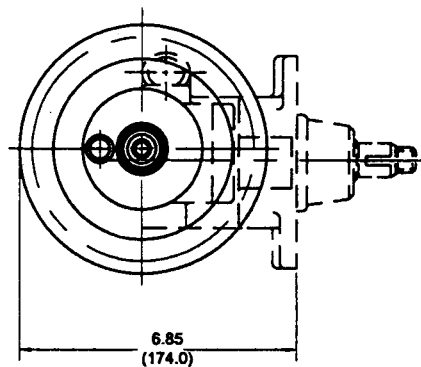
05	-500 psi (35 bar)
07	-750 psi (52 bar)
10	-1000 psi (70 bar)
12	-1250 psi (86 bar)
15	-1500 psi (100 bar)
17	-1750 psi (120 bar)
20	-2000 psi (140 bar)

TFP offers a complete line of economical high performance fixed displacement TVTM vane pumps providing flows up to 25 US GPM and pressures to 2000 psi for mobile and marine power steering applications. The integral flow control and relief valve eliminate the need for external valving and combined with the top mounted reservoir, you have a compact power package. Units can be supplied with a manifold assembly to be piped to an external tank or assembled on existing installations. Units are supplied with a threaded shaft and a heavy duty front bearing for gear and pulley drive assemblies.

TFP TVTM42 POWER STEERING PUMP INSTALLATION/DIMENSIONS



TFP RESERVOIRS ARE PRODUCED WITH A HEAVY GAUGE SIDE WALL THAT ALLOWS 115 CU IN SIZE TO BE MODIFIED TO 70 CU IN SIZE

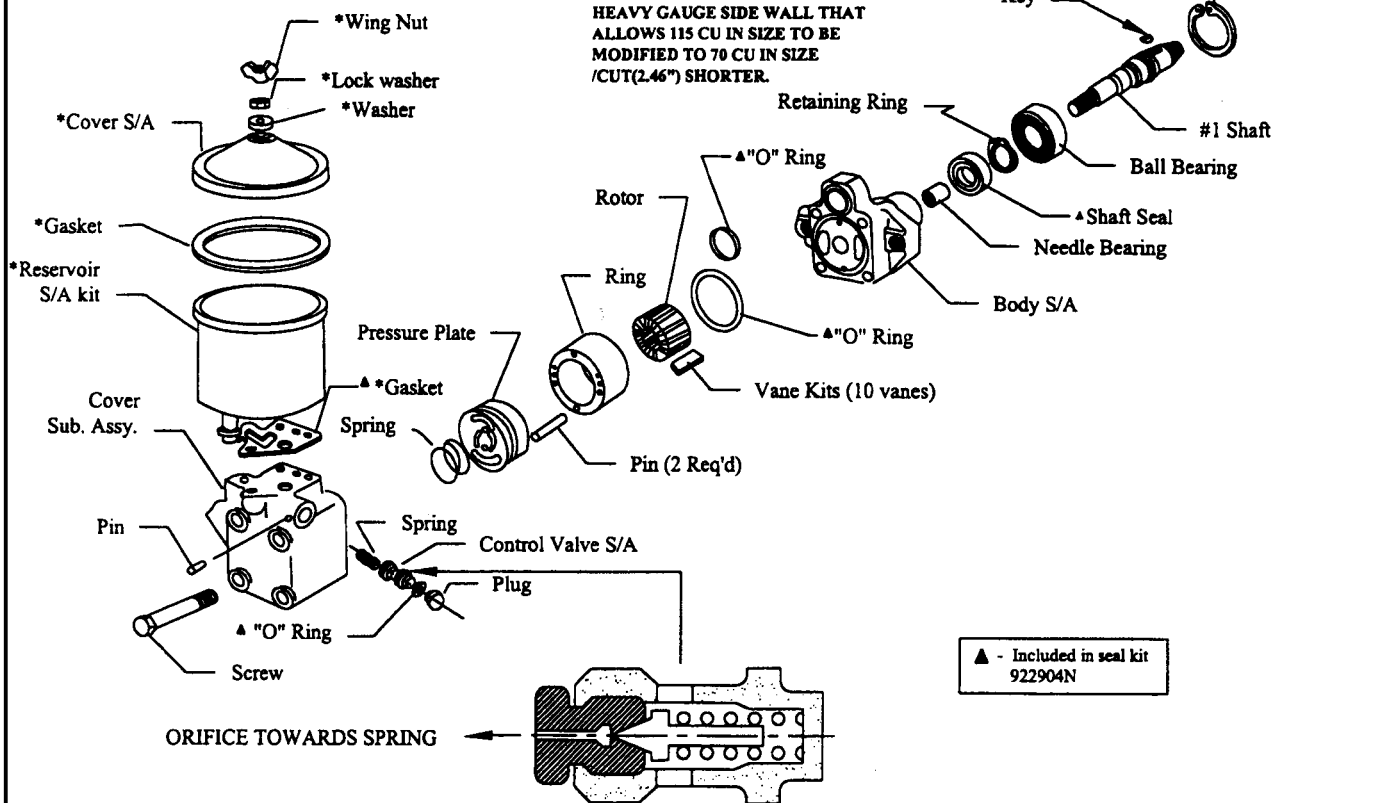


TFP TVTM42 POWER STEERING PUMP SERVICE PARTS INFORMATION



- NOTE -

- TANK COMES COMPLETE WITH ALL HARDWARE(*).
- IFF RESERVOIRS PRODUCED WITH HEAVY GAUGE SIDE WALL THAT ALLOWS 115 CU IN SIZE TO BE MODIFIED TO 70 CU IN SIZE /CUT(2.46") SHORTER.



MODEL	CARTRIDGE	ROTOR	VANE KIT (10 Vanes)	RING	PIN (2 req'd)	PRESSURE PLATE	SPRING
TVTM** - 10	923087N	213860N	912139N	296594N	217308N	276396N	289281N
TVTM** - 15	923088N			296595N			
TVTM** - 20	923089N			296596N			
TVTM** - 40	923090N			296597N			
TVTM** - 50	923091N	213859N	922594N	296598N	154364N	245507N	
TVTM** - 60	923092N		296599N				

MODEL	CONTROL VALVE S/A	RELIEF VALVE SETTING
TVTM**.-.-02	229613	250PSI
TVTM**.-.-03	255515	300PSI
TVTM**.-.-05	233018	500PSI
TVTM**.-.-06	247615	600PSI
TVTM**.-.-07	232794	750PSI
TVTM**.-.-08	397339	850PSI
TVTM**.-.-10	232795	1000PSI
TVTM**.-.-12	232796	1250PSI
TVTM**.-.-15	232797	1500PSI
TVTM**.-.-17	232798	1750PSI
TVTM**.-.-20	232799	2000PSI

Model	Reservoir S/A Kit	Seal Kit	Body S/A Kit	Needle Bearing	Shaft Seal	Retaining Ring	Ball Bearing	#1 Shaft	Key	Retaining Ring
TVTM-42-ST	70 Cu.in. 923837N	922904N	923951N	222440N	263585N	193732N	148423N	250455N	1606N	172376N
TVTM-42-BT	115 Cu.in. 923838N									

CARTRIDGE KIT ROTATION

To change cartridge kit rotation slide cam ring over rotor and vanes, making sure that radius edge of vanes is toward cam ring. Insert locating pins through cam ring, position cam ring so that the arrow on cam ring is pointing in the proper direction.

FLOW CONTROL RELIEF VALVE

When installing control relief valve install hex head first into the cover bore seating on the spring. Press plug fully in and insert lock pin.

**** WARNING ****

** Failure to follow these steps could cause serious malfunctions and pressures to rise to dangerous levels. **